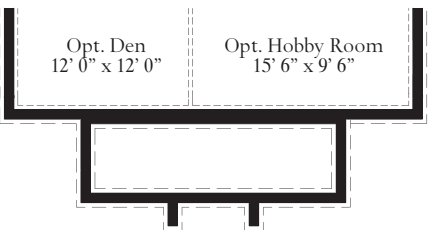
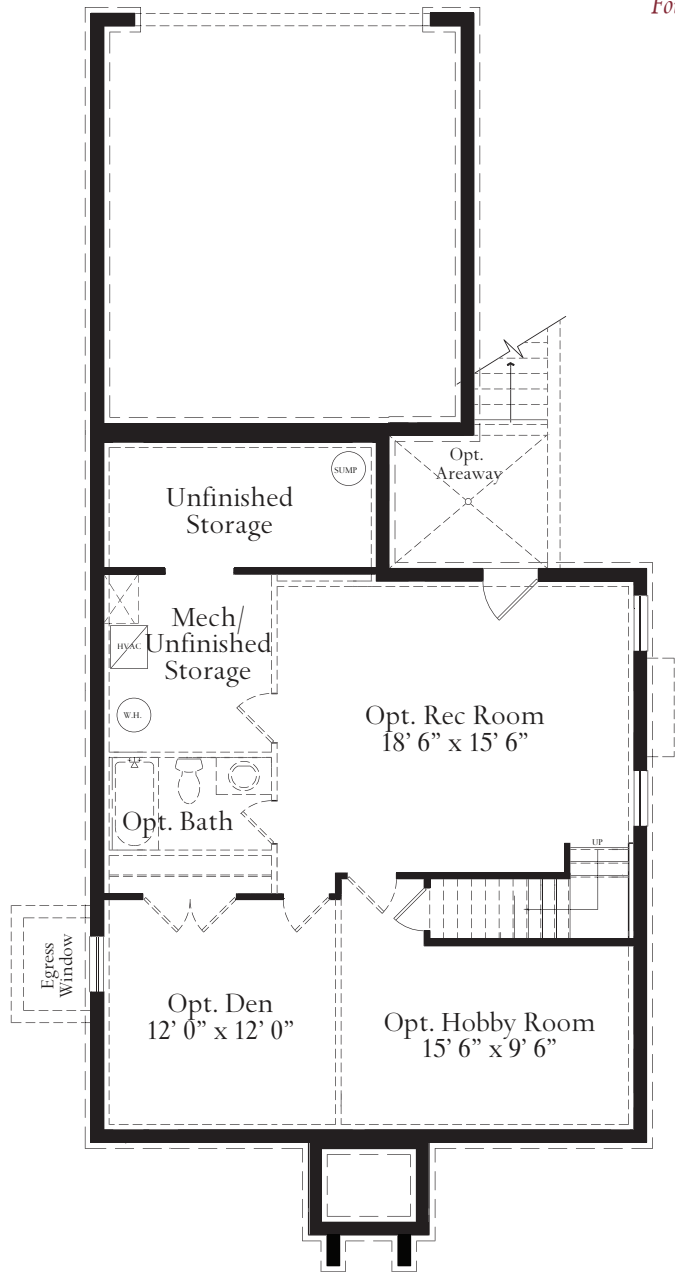


# The Harrison



Foundation with Opt. Full Porch



LOWER LEVEL



{ Eastern Seaboard }



{ Eastern Seaboard Featuring Front Porch }



{ Federal Featuring Portico }



{ Federal Featuring Front Porch }



{ Farmhouse }



{ Craftsman }

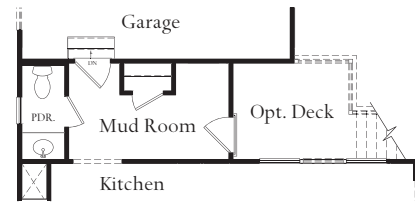
The Harrison provides traditional living with all of the modern conveniences. This two-story, four bedroom home has an open floor plan that is perfect for your family. The first floor offers 9-foot ceilings and a large kitchen with an oversized island that is open to the great room. The rear entry two car garage leads to the family foyer, next to the laundry room and powder room. At the front of the house, the study and dining/flex room are open to the foyer and offer spaces for Dining, home offices, a library, a playroom or whatever your family can dream of! Upstairs, the owner's suite is complete with a large walk in closet, double vanity, oversized shower and water closet. The three additional bedrooms share a large hall bath. There are options for an optional laundry closet, laundry room or loft on the second floor. With options for finishing the lower level with an optional rec room, den, bath and hobby room, your family can find space for all of their activities in the Harrison. Starting at 2063 sq. ft. Please note elevation drawings may show optional features.

**ATLANTIC BUILDERS**  
EXPERIENCE THE DIFFERENCE

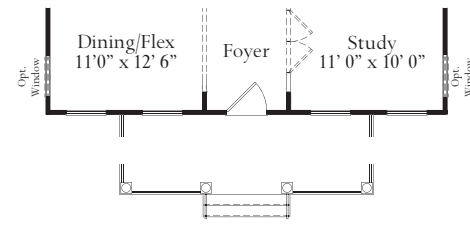


**ATLANTIC BUILDERS**  
EXPERIENCE THE DIFFERENCE

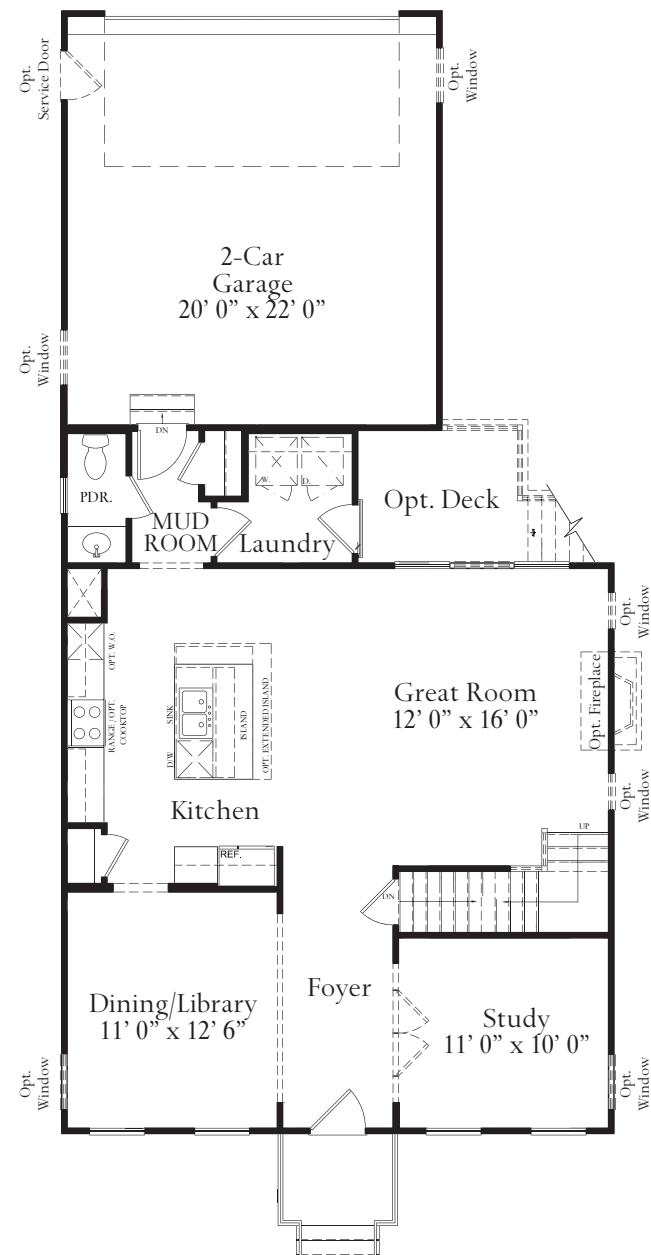
# The Harrison



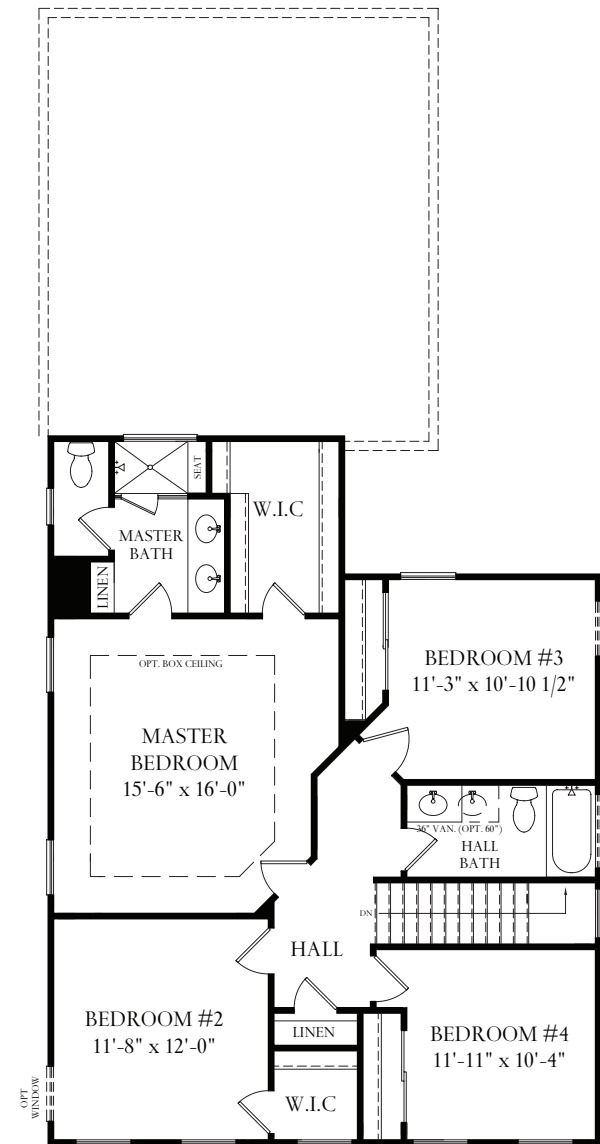
Mudroom w. Opt. Second Floor Laundry Room



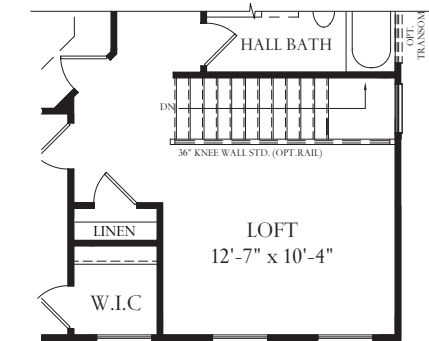
Opt. Full Porch



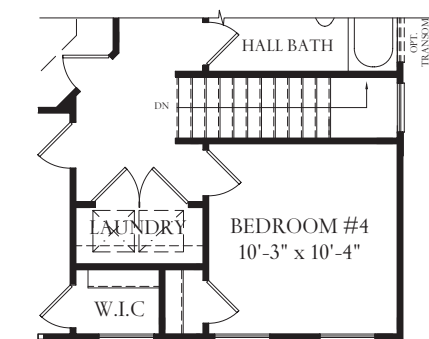
MAIN LEVEL



UPPER LEVEL



Opt. Loft



Opt. Laundry Closet

These renderings and floorplans are conceptual only. Actual details may vary. This insert is for illustrative purposes only. Atlantic Builders' continuing research and development program means specifications and plans are subject to change without notice. Standard features vary per community. Please consult Community Sales Manager for details.